



# Miyako Resort Shima Bayside Terrace

# Fact Book

## A Mediterranean-style resort hotel set against the breathtaking scenery of Ago Bay.

All guest rooms feature private terraces, and the photogenic, Mediterranean-inspired architecture creates the atmosphere of a serene seaside retreat.

The hotel's two head chefs—Japanese and French cuisine—craft full-course menus using carefully selected ingredients sourced from the rich natural environment of Ise-Shima. Their distinctive culinary styles offer guests a memorable dining experience.

Shima Bayside Terrace invites guests to enjoy exceptional views and refined gastronomy, embodying the essence of a true "seaside auberge."

## Miyako Resort Shima Bayside Terrace

3618-33 Ugata, Ago-cho, Shima City, Mie  
517-0501, Japan

TEL +81-599-43-7211

FAX +81-599-43-7225

<https://www.miyakohotels.ne.jp/bayside-terrace/>

Check-in : 15 : 00 / Check-out : 11 : 00

Guest Rooms: 108



Restaurants: 4(Marena SHIMA French / Marena SHIMA Japanese / Ribera / Café Lounge & Terrace)

Banquet Rooms: 2(Banquet Room "Arc-en-Ciel" / Meeting Room)

Facilities: Outdoor pool (summer only), large public bath, shop, tennis courts, fitness room, vending machines, water dispensers

## History

Opened in 1992 as Prime Resort Kashikojima, a luxury members-only hotel adjacent to the prestigious Kintetsu Kashikojima Country Club. After a brand reorganization in 2019, it was renamed Miyako Resort Shima Bayside Terrace, which it remains today. As a full-service resort hotel designed for an elegant and relaxing adult getaway, the property welcomes guests with refined hospitality.

Opening Date: July 1, 1992

Renovation History: Apr. 2018: 15 rooms (Ocean Wing 3F)

Dec. 2024: Exterior walls, restaurants, 76 rooms (Ocean Wing 1-2F, Garden Wing)

## Access

● Kintetsu Limited Express to Kashikojima Station:

From Osaka Namba: 2.5 hrs

From Kyoto: 3 hrs

From Nagoya: 2 hrs 20 min

● Shuttle bus from Kashikojima Station: 7 min

● By Car:

From Ise Expwy, Ise Nishi IC: 40 min via Ise Rd

From Ise Expwy via Second Ise Rd (direct): 50 min

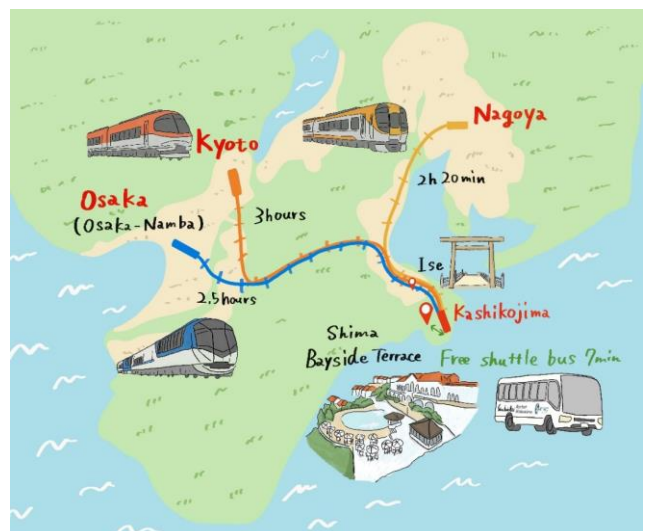
■ Parking: Cars: 63, free

Buses: 2, free

■ EV Charging: 3 units × 200V

6 kW / 30A

Paid charging, open 24 hours



Introducing the unique charms of Miyako Resort Shima Bayside Terrace."

## Photogenic Mediterranean-style architecture

A resort hotel with terraces in every room, overlooking the stunning Ago Bay. Exotic architecture and refined interiors make the entire property photogenic, offering both breathtaking views and the thrill of a foreign getaway.



## A seaside auberge offering seasonal local cuisine

Shima Bayside Terrace celebrates the rich bounty of Ise-Shima, from seasonal local fish and vegetables to spiny lobster, abalone, and Matsusaka beef. Our Japanese and French chefs transform these ingredients into exquisite full-course meals, offering a unique fusion of flavors in every season."



## Discover Ise-Shima: Ise Grand Shrine, Pearls, and Ama Culture

Near Bayside Terrace lies Ise Grand Shrine, the spiritual heart of Japan. Adjacent Ago Bay, the birthplace of cultured pearls, offers pearl farm tours, workshop to extract pearls from shells, and high-quality pearls at local prices. Explore the 3,000-year-old ama\* diver tradition and enjoy a journey rich in history, nature, and unique cultural experiences. \*Women who dive without breathing equipment to collect sea products.



**Step through the entrance, and you're in another world.**

Step through the main entrance into an open lobby with stunning views of Ago Bay. A Spanish-style fountain and arabesque-inlaid marble floors set the mood for an elegant stay.



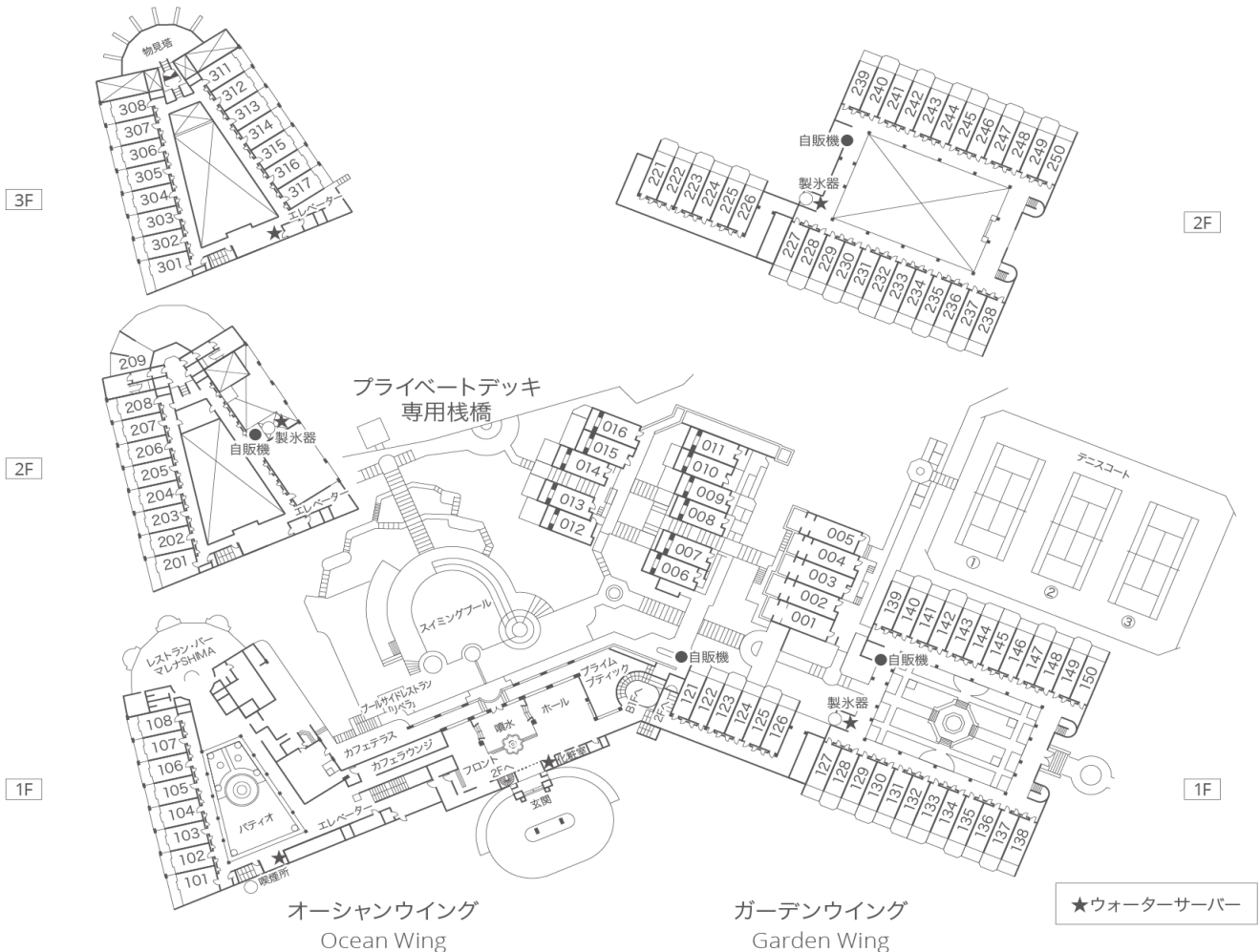
**To the sea, to the sky — a nature-shaped design.**

The floor plan makes the most of the gently sloping hill and coastal site. Centered on the lobby, the Garden Wing and Ocean Wing stretch westward, offering beautiful sunsets from anywhere in the hotel.



**108 unique rooms in three styles, all with terraces.**

Choose from three distinctive room types: the bright, symmetrical Garden Wing facing the patio, the open Ocean Wing with sea views, or a duplex villa for up to six guests. All rooms have terraces to enjoy the full resort experience.



## Shima Bayside Terrace – Room Mix

All rooms come with a terrace, offering an open and relaxing stay with a true resort atmosphere.

Room Type			m <sup>2</sup>	Rooms	Max Occ.	Bed Config.	Daybed Config.	
Garden Wing	1&2F	Garden Twin	40.5	43	4	120cm×2	115cm×1	※1 Extra bed available
	2F	Japanese Twin	40.5	12	4	120cm×2		※2 futons available
	1F	Doggy Room	40.5	5	3	120cm×2	115cm×1	
Ocean Wing	1&2F	Ocean Twin	40.5	14	3	120cm×2	110cm×1	
	3F	Superior Twin	40.5	14	2	120cm×2		
	1&2F	Deluxe Twin	50.0	2	4	120cm×2	110cm×1	※1 Extra bed available
	3F	Superior Corner Twin	50.0	1	3	120cm×2		※1 Extra bed available
	2F	Suite	87.0	1	2	140cm×2		
Villa	1&2F	Duplex	85.0	16	6	110cm×4		※2 Extra beds available
Total				108				

※Daybed: normally used as a sofa, convertible to a bed as needed.



### Garden Wing

The Garden Wing surrounds a bright, symmetrical patio and offers 60 rooms across the 1st and 2nd floors. For families with young children or those seeking extra comfort, Japanese Twin Rooms feature a 4.5-tatami mat area and can be connected to adjacent rooms. On the 1st floor, 5 dog-friendly rooms are available for guests traveling with their dogs.



### Ocean Wing

The Ocean Wing offers open terraces with sea views, centered around a striking Water Chapel. Guests can enjoy a special in-room breakfast service and relax on their bright, ocean-facing terrace for a truly memorable resort stay.



### Villa

Spacious 85m<sup>2</sup> duplex villas for up to six guests, each with a private terrace and garden. Set on a gentle sea-facing slope, the villas and white-walled pathways offer a photogenic, resort-like retreat.

## Room 《Garden Twin》



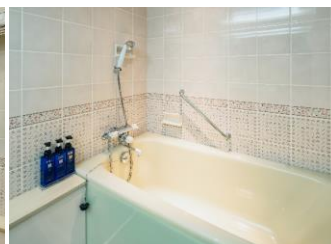
Warm, wood-accented guest rooms create a cozy atmosphere. A low wall from headboard to window opens up the space, while warm-toned textiles add a relaxing touch.



- Size: 40.5㎡
  - Max Occ.: 4 people
  - Bed: 120cm×2
  - Daybed: 115cm×1
    - ※For 3-4 guests: Extra bed or daybed available
  - Floor: Garden Wing 1F&2F
  - Number of Rooms: 43
- Key type: Cylinder key
  - Bath & Toilet: Separate, with heated bidet
  - Terrace: 10㎡
  - Refrigerator: Yes (no minibar)
  - Wi-fi: Yes
  - Others: Humidifying air purifier, safety box; on-site water dispenser, ice machine, vending machines etc.



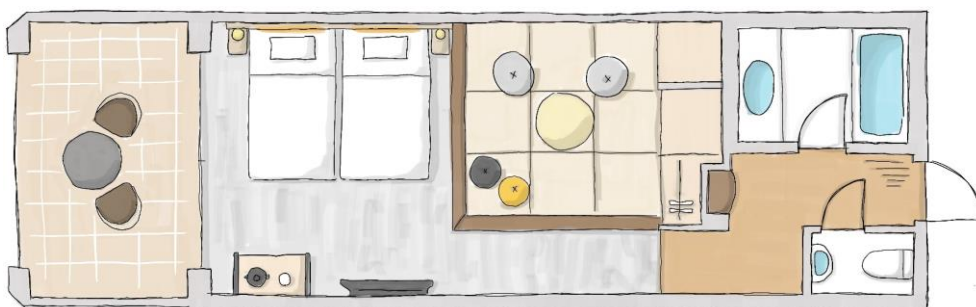
DHC facial care set



Room 《Japanese Twin》



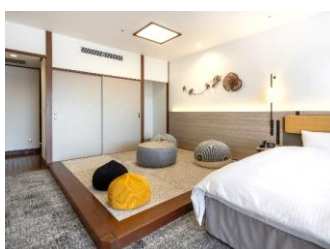
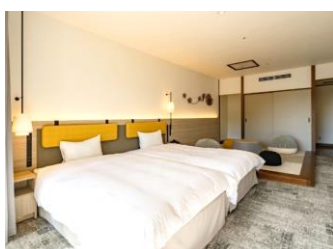
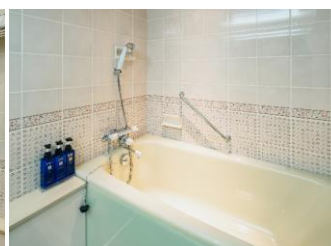
Guest rooms with a 4.5-tatami mat area, popular with families. Accommodates up to 4 guests with futons, featuring “pouf” stools for added comfort. Some rooms can be connected to adjacent rooms.



- Size: 40.5㎡
- Max Occ.: 4 people
- Bed: 120cm×2
  - ※For 3-4 guests: Futon available
- Floor: Garden Wing 2F
- Number of Rooms: 12
  - ※Garden Wing 2F: stairs only.
- Key type: Cylinder key
- Bath & Toilet: Separate, with heated bidet
- Terrace: 10㎡
- Refrigerator: Yes (no minibar)
- Wi-fi: Yes
- Others: Humidifying air purifier, safety box; on-site water dispenser, ice machine, vending machines etc.



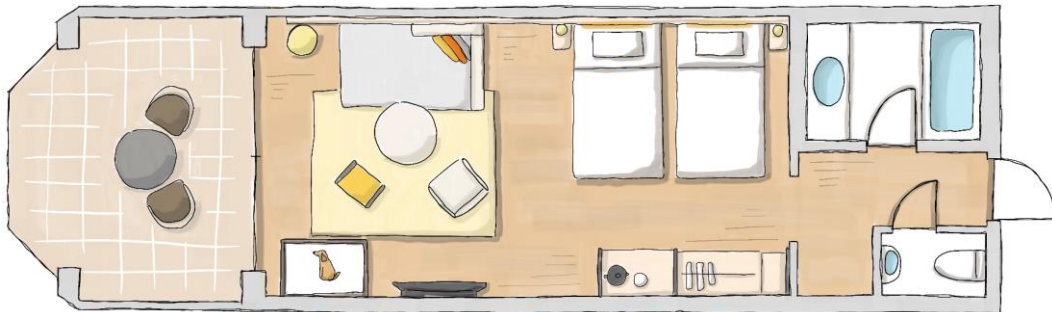
DHC facial care set



Room 《Doggy Room》



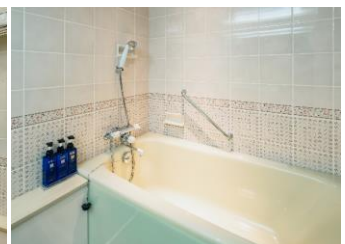
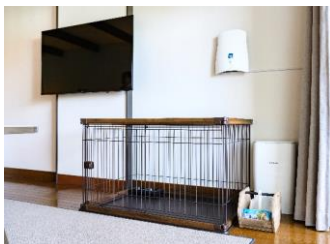
Guest rooms designed for a comfortable stay with your dog, equipped with a dog cage, bowls, toilet pads, and paw towels. A dedicated entrance from the parking area allows easy, private access to the room.



- Size: 40.5㎡
- Max Occ.: 3 people  
+2 dogs(under 10kg)
- Bed: 120cm×2
- Daybed: 115cm×1  
※For 3 guests: Daybed available
- Floor: Garden Wing 1F
- Number of Rooms: 5
- Key type: Cylinder key
- Bath & Toilet: Separate, with heated bidet
- Terrace: 10㎡
- Refrigerator: Yes (no minibar)
- Wi-fi: Yes
- Others: Humidifying air purifier, safety box; on-site water dispenser, ice machine, vending machines etc.



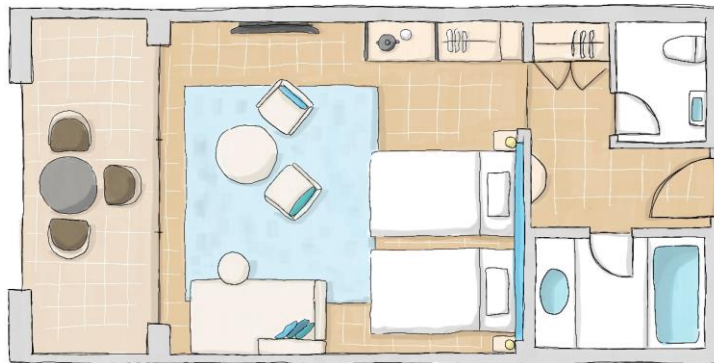
DHC facial care set



Room 《Ocean Twin》



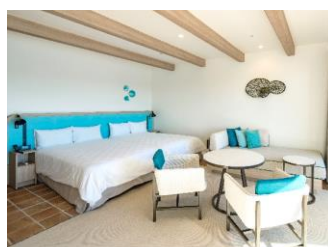
Ocean-view terrace rooms with bright, natural interiors accented in Ago Bay blue. Functional wardrobes and open layouts create a comfortable, resort-like stay.



- Size: 40.5㎡
- Max Occ.: 3 people
- Bed : 120cm×2
- Daybed : 110cm×1  
※For 3 guests: Daybed available
- Floor : Ocean Wing 1F&2F
- Number of Rooms : 14
- Key type: Cylinder key
- Bath & Toilet: Separate, with heated bidet
- Terrace : 10㎡
- Refrigerator: Yes (no minibar)
- Wi-fi: Yes
- Others: Humidifying air purifier, safety box; on-site water dispenser, ice machine, vending machines etc.



MIKIMOTO facial care set



Room 《Superior Twin》



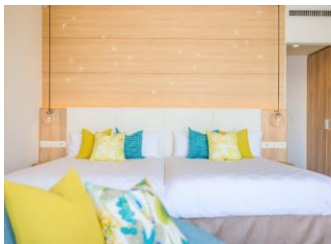
Top-floor Superior Twin rooms in the Ocean Wing feature bright, sea-inspired interiors in blue-green and yellow. Enjoy in-room breakfast while taking in open, resort-style ocean views.



- Size: 40.5㎡
- Max Occ.: 2 people
- Bed: 120cm×2
- Floor: Ocean Wing 3F
- Number of Rooms: 14
- ※Mini red/white wine
- ※Breakfast room service (no summer)
- Key type: Cylinder key
- Bath & Toilet: Separate, with heated bidet
- Terrace : 10㎡
- Refrigerator: Yes (no minibar)
- Wi-fi: Yes
- Others: Humidifying air purifier, safety box; on-site water dispenser, ice machine, vending machines etc.



MIKIMOTO facial care set



## Room 《Deluxe Twin》



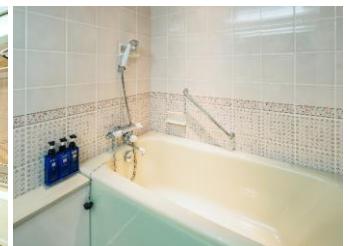
Corner rooms on the 1st and 2nd floors of the Ocean Wing, 50m<sup>2</sup>, with bright, natural interiors accented in sea-inspired blue. Accommodates up to 4 guests with a daybed and extra bed.



- Size: 50.0m<sup>2</sup>
- Max Occ.: 4 people
- Bed: 120cm×2
- Daybed: 110cm×1  
※For 3-4 guests: Extra bed or daybed available
- Floor : Ocean Wing 1F&2F
- Number of Rooms : 2
- Key type: Cylinder key
- Bath & Toilet: Separate, with heated bidet
- Terrace : 14m<sup>2</sup>
- Refrigerator: Yes (no minibar)
- Wi-fi: Yes
- Others: Humidifying air purifier, safety box; on-site water dispenser, ice machine, vending machines etc.



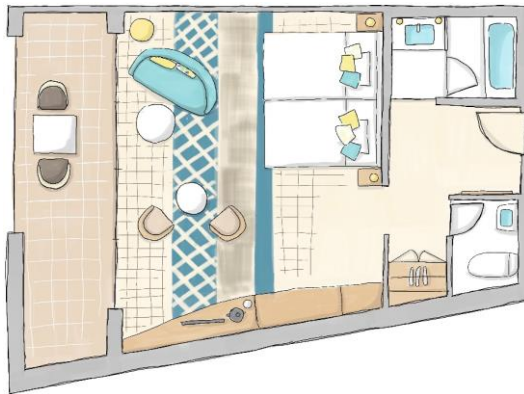
MIKIMOTO facial care set



Room 《Superior Corner Twin》



This is a corner guest room of the Superior Twin located on the top floor of the Ocean Wing. In addition to its spacious 50m<sup>2</sup> layout, the wide terrace offers a panoramic view of Ago Bay.



- Size: 50.0m<sup>2</sup>
- Max Occ.: 3 people
- Bed: 120cm×2
  - ※For 3 guests: Extra bed available
- Floor: Ocean Wing 3F
- Number of Rooms: 1
- ※Mini red/white wine
- ※Breakfast room service (no summer)
- Key type: Cylinder key
- Bath & Toilet: Separate, with heated bidet
- Terrace: 14m<sup>2</sup>
- Refrigerator: Yes (no minibar)
- Wi-fi: Yes
- Others: Humidifying air purifier, safety box; on-site water dispenser, ice machine, vending machines etc.



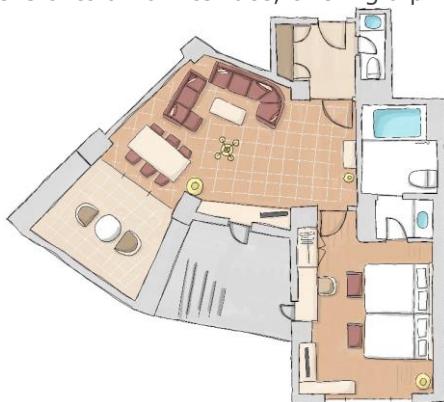
MIKIMOTO facial care set



Room 《Suite》



Spacious 87m<sup>2</sup> suites with classical furnishings, featuring two-sided windows overlooking Ago Bay. The living room opens onto a 16m<sup>2</sup> terrace, offering a private, panoramic sea view.



- Size: 87.0m<sup>2</sup>
- Max Occ.: 2 people
- Bed: 140cm×2
- Floor: Ocean Wing 2F
- Number of Rooms : 1

※ Mini red/white wine

- Key type: Cylinder key
- Bath & Toilet: Separate, with heated bidet
- Terrace: 16m<sup>2</sup>
- Refrigerator: Yes (no minibar)
- Wi-fi: Yes
- Others: Humidifying air purifier, safety box; on-site water dispenser, ice machine, vending machines etc.



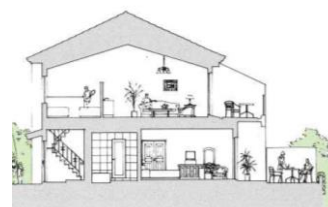
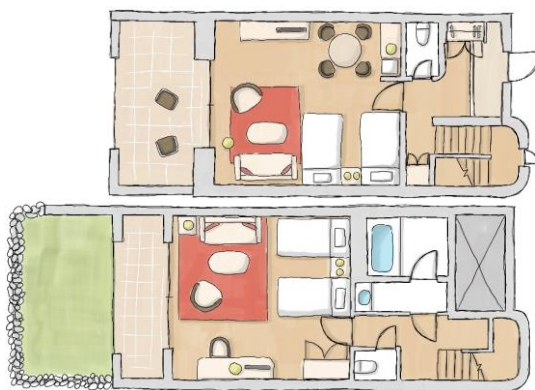
MIKIMOTO facial care set



Room 《Villa》



16 duplex villas built on a gentle sea-facing slope, each with private terraces and gardens. Perfect for small groups of up to six guests.



- Size: 85.0㎡
  - Max Occ.: 6 people
  - Bed : 110cm×4
    - ※For 6 guests: 2 Extra beds available
  - Floor: 2-story units
    - 3 rows on a slope (5-6 each)
  - Number of Units: 16
  - ※Smoking rooms: 5 units
- Key type: Cylinder key
  - Bath & Toilet: Separate, with heated bidet
  - Terrace: 約16㎡
  - Refrigerator: Yes (no minibar)
  - Wi-fi: Yes
  - Others: Humidifying air purifier, safety box; on-site water dispenser, ice machine, vending machines etc.



DHC facial care set



## Shima Bayside Terrace – Restaurant List

Two main dining options—Marena SHIMA French and Marena SHIMA Japanese—plus a bar, café, and summer BBQ restaurant offer dining for every travel occasion.

Restaurant Name		Seats	Meal Type	Operation Hours	Others	
Ocean Wing	1 F	Marena SHIMA French	78	Morning	7:00~10:00 (9:30L.O.)	Lunch: reservation from 15+ 11:30~14:00
				Dinner (Weekdays)	17:30~22:00 (19:30L.O.)※See below	
				Dinner (Weekend/Holiday)	17:30~22:00 (20:30L.O.)	
	1 F	Marena SHIMA Japanese	41	Morning	7:00~10:00 (9:30L.O.)※Open Sat–Mon	Lunch: reservation from 15+ 11:30~14:00
				Dinner (Weekdays)	17:30~22:00 (19:30L.O.)※Closed Tue	
				Dinner (Weekend/Holiday)	17:30~22:00 (20:30L.O.)	
	Marena SHIMA Bar	Counter 8 Couple 12	Bar	21:00~23:00 (22:30L.O.)		
Lobby Building	1 F	Café Lounge & Terrace	Indoor 22 Terrace 12	Café	11:00~17:00 (Food L.O.16:00/Drink L.O.16:30)	
	B2F	ribera (BBQ Restaurant)	44	Lunch	12:00~14:00	Summer only (Off-season) reservation from 15+
				Dinner (Weekdays)	17:30~22:00 (19:30L.O.)	
				Dinner (Weekend/Holiday)	17:30~22:00 (20:30L.O.)	
	Pool Side Bar		Irregular hours (see hotel website)			

※All non-smoking ※From April 2026, Marena SHIMA French dinner will be closed on Thursdays.



Main Dining  
『Marena SHIMA』

Shima Bayside Terrace’s main dining—French and Japanese—serves full-course meals crafted from Ise-Shima’s local ingredients, embodying a seaside auberge.

## Marena SHIMA French

Enjoy French cuisine featuring spiny lobster, abalone, and local Ise-Shima ingredients in a bright, airy setting overlooking Ago Bay. Artistic, photogenic presentations offer an experience of art on the plate.



- Seats 78
- Hours [Morning] 7:00~10:00 (9:30L.O.)  
[Dinner (wkdays)] 17:30~22:00 (19:30L.O.)  
[Dinner (Wend/Hol)] 17:30~22:00 (20:30L.O.)
- Closed days Morning: None Dinner: Thu from Apr 2026
- Dinner Reservation  
via hotel website or phone (+81-599-43-7211)
- Smoking All non-smoking

- **Morning**  
Mie Shima Breakfast ¥4,000 per person  
Kids Breakfast ¥1,500 per person
- **Dinner**  
Perle ¥9,000 per person  
Harmony ¥14,000 per person  
Brilliant ¥20,000 per person



**Perle ¥9,000**

A course with both fish and meat mains, offering generous portions and elegant presentation in a casual style.



**Harmony ¥14,000**

A standard course featuring spiny lobster and beef fillet, crafted with Ise-Shima ingredients and vibrant, creative flair.



**Brilliant ¥20,000**

Top-tier Marena SHIMA French course featuring spiny lobster, abalone, and Matsusaka beef, crafted with precision and playful artistry.

# Marena SHIMA French DINNER

image



Perle ¥9,000



Harmony ¥14,000



Brilliant ¥20,000



## Marena SHIMA Japanese

Experience the essence of Japanese cuisine crafted with Mie's finest ingredients, enjoyed in a relaxed dining room overlooking Ago Bay. Featuring spiny lobster, abalone, Matsusaka beef, and Pearl Pork, along with a rich selection of local sake for pairing.



- Seats 41
- Hours [Morning] 7:00~10:00 (9:30L.O.)  
[Dinner (wkdays)] 17:30~22:00 (19:30L.O.)  
[Dinner (Wend/Hol)] 17:30~22:00 (20:30L.O.)
- Closed days Morning: Tue-Fri (Open on Sat, Sun, Mon)  
Dinner: Tue
- Dinner Reservation  
via hotel website or phone (+81-599-43-7211)
- Smoking All non-smoking

- **Morning**  
Japanese Breakfast ¥4,000 per person  
Kids Breakfast ¥1,500 per person
- **Dinner**  
Chigusa ¥9,000 per person  
Tsuyukusa ¥14,000 per person  
Shukakusai ¥20,000 per person



**Chigusa ¥9,000**

A course that prioritizes quality over quantity, full of the chef's playful creativity. Pairs beautifully with our selection of local sake.



**Tsuyukusa ¥14,000**

A standard course with spiny lobster and seasonal Mie seafood, highlighting seasonal flavors for a satisfying meal.



**Shukakusai ¥20,000**

The most luxurious Marena SHIMA Japanese course, featuring spiny lobster, abalone, and Matsusaka beef—delighting the eyes, taste, and aroma.

# Marena SHIMA Japanese DINNER

image



Chigusa ¥9,000



Tsuyukusa ¥14,000

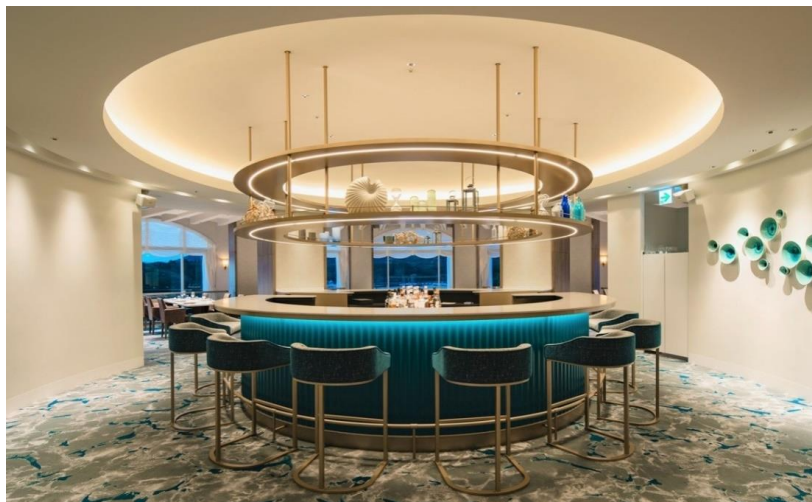


Shukakusai ¥20,000



## Marena SHIMA Bar

The circular counter at the center defines the stylish Malena SHIMA Bar. Enjoy seasonal, hotel-original cocktails while taking in the softly illuminated, atmospheric interior.



- Seats Counter 8 Couple 12(6 table) All non-smoking
- Hours 21:00~23:00 (22:30L.O.)
- Whiskey ¥1,000~
- Cocktail ¥1,500~
- Non-alcoholic ¥1,000~ etc.

## Café Lounge & Terrace

A relaxing spot offering seasonal cakes, sweets, and light meals. Guests can choose between an open-air terrace and an indoor lounge that can be enjoyed in any season or weather.



- Seats Indoor 22 Terrace 12 All non-smoking
- Hours 11:00~17:00 (Food L.O.16:00/Drink L.O.16:30)
- Coffee— ¥700
- Cake ¥800 Drink set ¥1,300~
- Matsusaka Beef Curry ¥2,600 etc.

## ribera

“Ribera” means “freedom” in Spanish, fitting for this casual restaurant where guests can enjoy a lively, free-spirited BBQ. A wide selection is available, including shrimp, squid, turban shell, scallops, beef loin, short rib, tenderloin, and sausages.



- Seats 44 All non-smoking
- Hours [Lunch] 12:00~14:00  
[Dinner (Weekdays)] 17:30~22:00 (19:30L.O.)  
[Dinner (Weekend/Holiday)] 17:30~22:00 (20:30L.O.)
- Reservation phone (+81-599-43-7211)  
※Open summer only. ※Group reservations for 15 guests or more are accepted outside the summer season.
- BBQ Adults ¥9,000 / ¥14,000 Child ¥4,500  
Family ¥18,000 (2 Adults & 1-2 Children)

## Pool Side Bar

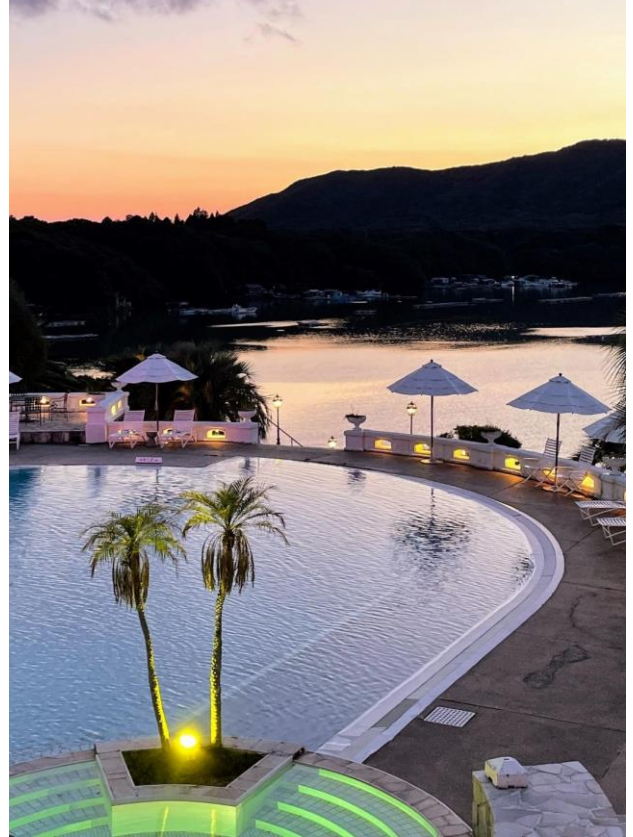
A poolside bar perfect for enjoying a resort atmosphere. The west-facing setting of Shima Bayside Terrace offers stunning sunsets at the Sunset Poolside Bar.



- Open irregularly (see hotel website).

## Pool (summer season)

The pool in front of the hotel offers a sense of openness as if merging with the sea. Enjoy a refreshing swim under the sun by day, and a magical, illuminated atmosphere by night—perfect for a true resort experience.



※Operating period and hours vary by season.

- Operating hours in 2025      July 4 – September 24  
     <Daytime> 9 : 00 ~ 19 : 00    <Nighttime ※Junior high and above> 19 : 30 ~ 21 : 30
- Charge                      <Daytime> Free    <Nighttime> ¥3,500 (includes 1 drink)

## Public Bath

A spacious public bath to relax after golf or sightseeing, complete with a sauna for added comfort.



■ Hours  
 6 : 00 ~ 10 : 00  
 15 : 00 ~ 22 : 00

## Shop "PRIME BOUTIQUE"

Ise-Shima specialties, souvenirs, soft drinks, and snacks available.



- Hours 8 : 00~11 : 30 / 16 : 00~20 : 00
- ※Closed days announced on our website.

## Tennis Court

Three artificial turf tennis courts are available.



- Hours 9 : 00~18 : 00 (Winter 9 : 00~17 : 00)
- Charge Weekday ¥2,500/h  
Weekend, Hol, Summer ¥3,000/h

## Rental Bicycles

Electric rental bikes available for local cycling.



- Charge ¥2,000/3h  
¥3,000/6h

## Table Tennis

Add a touch of activity to your stay. We offer a table tennis room for casual enjoyment.



- Hours 9 : 00~22 : 00
- Charge ¥2,000/1h

## Stargazing

Enjoy stargazing with our "Star Guide" using telescopes installed above the hotel.



- Every Thursday (Sundays from Apr 2026)
- Charge Free

## Morning Yoga

Enjoy early morning yoga while overlooking the sea.



- Held in summer
- @Banquet Room "Arc-en-Ciel"

## Meeting Room

Conduct focused yet relaxing meetings in a serene resort setting. Equipped for corporate training, seminars, off-site meetings, and team-building, it accommodates a wide range of business events.



Classroom (Capacity 20)



Hollow square (Capacity 20)

- Area: 47.3m<sup>2</sup>
- Capacity: [Classroom/Hollow square]20 / [Theater]30
- Equipment: Tables, chairs, projector, screen (80"), monitor (50"), whiteboard, mic, Wi-fi, etc.
- Charge: ¥24,200/2h~ ※varies by season/use
- Contact: Tel: +81-599-43-7211

## Banquet Room "Arc-en-Ciel"

An open, light-filled banquet hall with ocean views, perfect for parties, dinners, and weddings, offering exquisite cuisine and refined hospitality for a memorable resort experience.



- Area: 140m<sup>2</sup>
- Capacity: [Classroom]54 / [Seated]56 / [Theater]60
- Equipment: Tables, chairs, stage, electronic organ, projector, screen (80"), mic, Wi-fi, etc.
- Charge: ¥18,150/2h~ ※varies by season/use
- Contact: Tel: +81-599-43-7211

## Photos

Photos of Shima Bayside Terrace. Free to use in brochures.  
For data, please contact us by email (bayside-t@miyakohotels.ne.jp).



1. Exterior (Day)



2. Exterior (Night)



3. Aerial view①



4. Aerial view②



5. Lobby



6. Garden Wing



7. Ocean Wing



8. Villa



9. Marena SHIMA French



10. Morning  
(Western)



11. Dinner(¥9000)



12. Dinner(¥14000)



13. Dinner(¥20000)



14. Marena SHIMA Japanese



15. Morning  
(Japanese)



16. Dinner(¥9000)



17. Dinner(¥14000)



18. Dinner(¥20000)



19. Garden Twin



20. Japanese Twin



21. Doggy Room



22. Terrace(Garden)



23. Amenities①



24. Ocean Twin



25. Superior Twin



26. Deluxe Twin



27. Terrace(Ocean)



28. Amenities②



29. Superior Corner Twin



30. Suite



31. Villa①

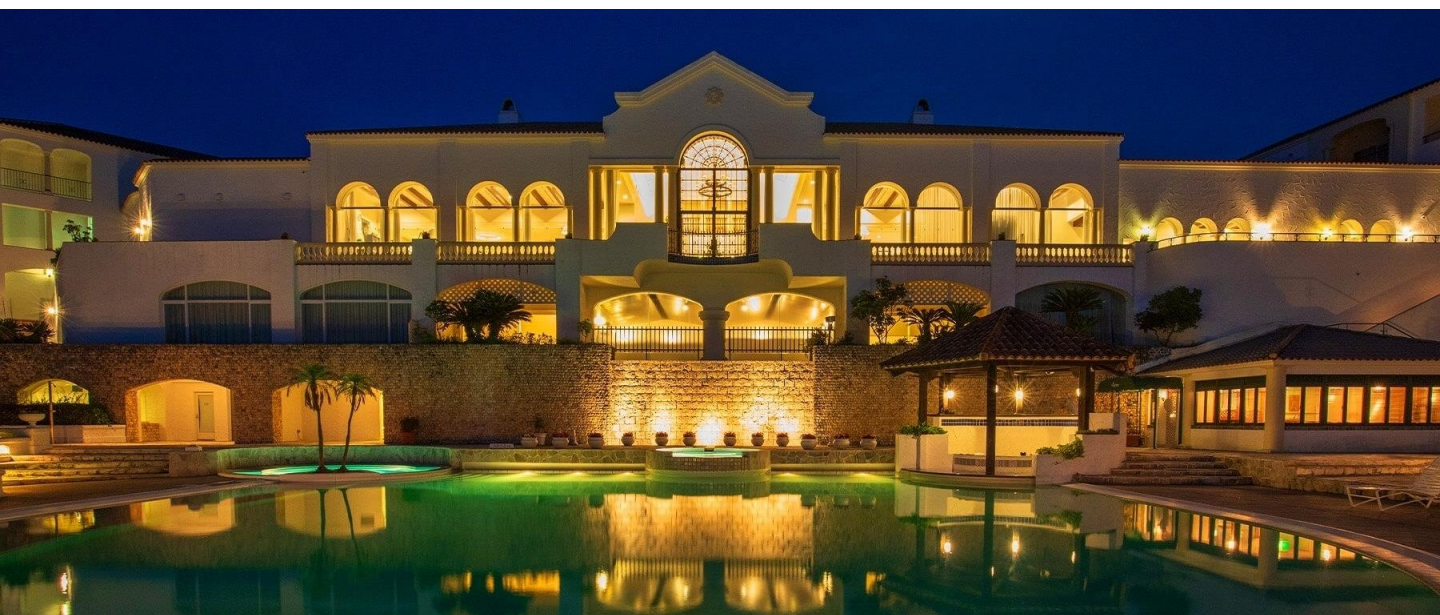


32. Villa②



33. Amenities③

A southern European–style seaside auberge overlooking the stunning views of Ago Bay.



## Miyako Resort Shima Bayside Terrace